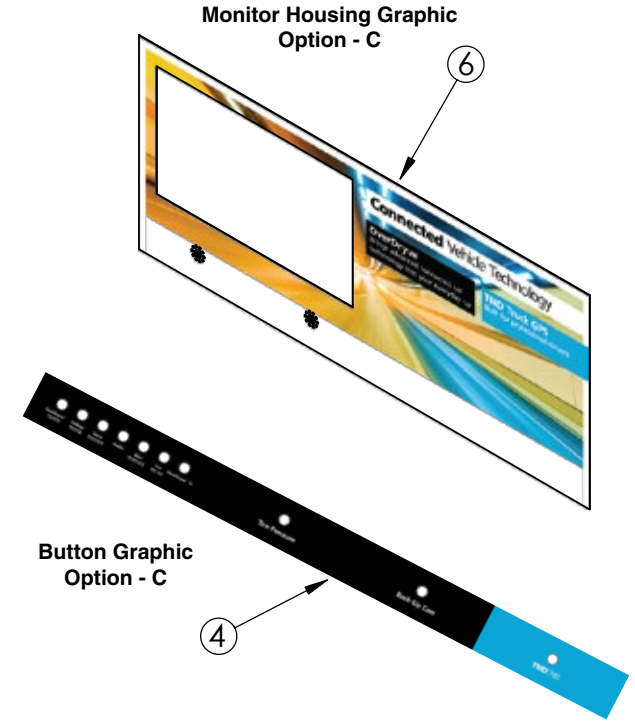
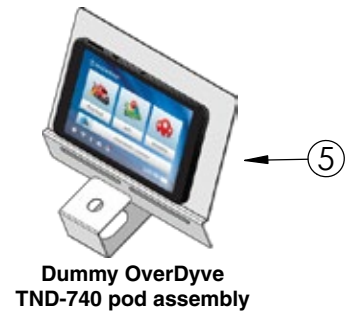
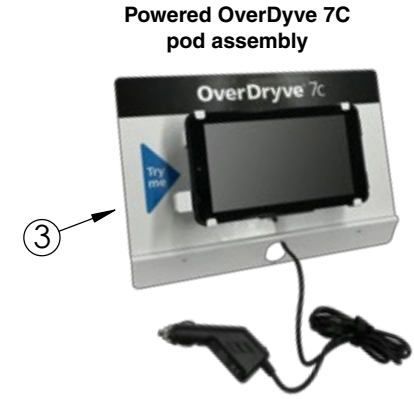
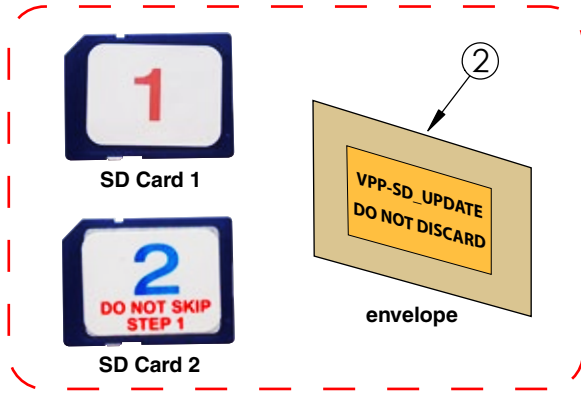
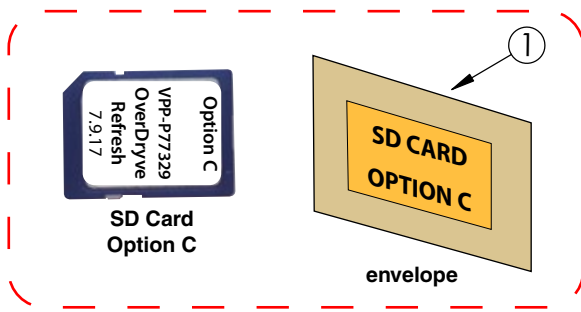
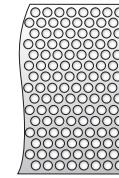


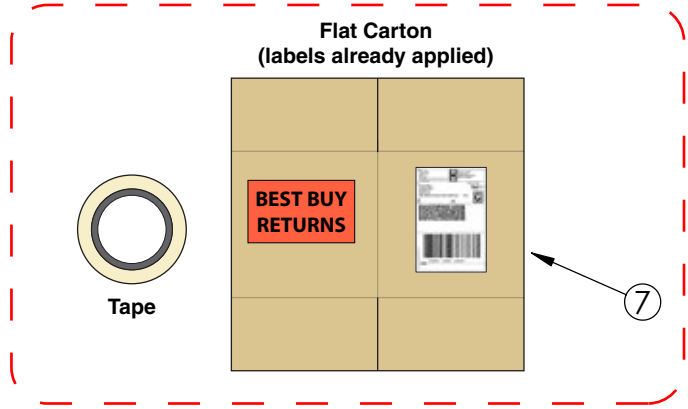
Rand McNally OverDryve Display ME-01 - Refresh Option C



DO NOT DISCARD BUBBLE WRAP
DO NOT DISCARD FLAT RETURN SHIPPING CARTON
SET ITEMS ASIDE FOR LATER REUSE



ITEM NO.	PART NO.	DESCRIPTION	QTY
1	VPP-77329	SD CARD - OPTION C	1
2	VPP-SD_UPDATE	SD CARD 1 AND SD CARD 2 MEDIA PLAYER SOFTWARE UPDATE	1
3	VPP-77613	POWERED OVERDRYVE 7C POD ASSEMBLY	1
4	VPP-77617	BUTTON GRAPHIC - OPTION C	1
5	VPP-77624	DUMMY OVERDRYVE TND 740 POD ASSEMBLY	1
6	VPP-77618	MONITOR HOUSING GRAPHIC - OPTION C	1
7	N/A	FLAT CARTON (prepaid return shipping label applied) AND TAPE	1

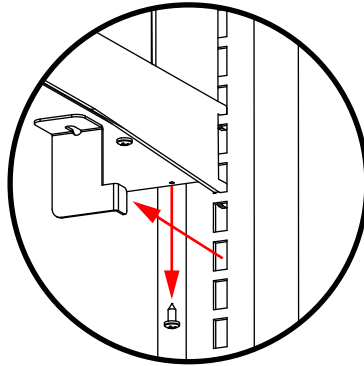


Rand McNally OverDryve Display ME-01 - Refresh Option C

⚠ DISPLAY MUST BE REMOVED FROM GONDOLA ⚠

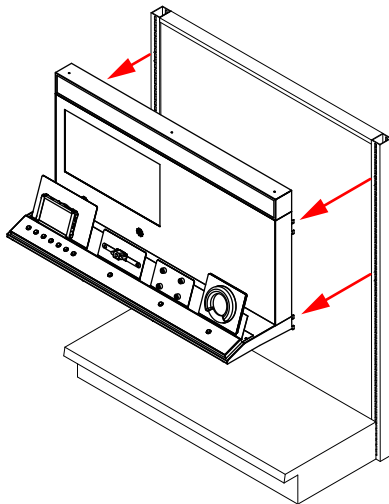
1 REMOVING DISPLAY FROM GONDOLA --- TWO PEOPLE REQUIRED

- A** On underside of display, on the left and right, remove safety brackets securing display to gondola by removing screw, then place brackets and screws aside.

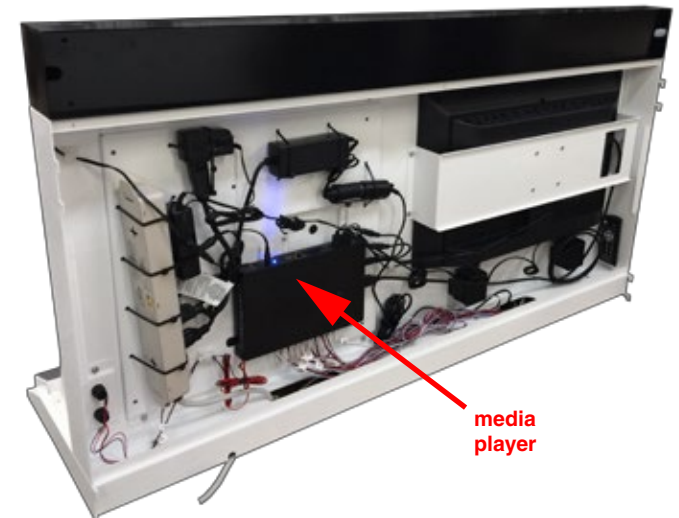


⚠ TWO PEOPLE REQUIRED ⚠

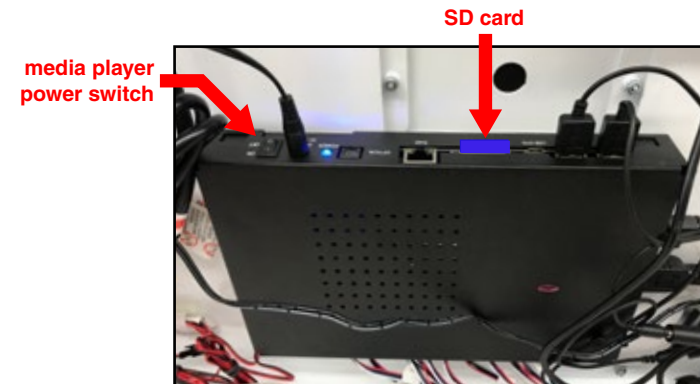
- B** Remove display from gondola by lifting it up then pull it forward. Place display on shelf (not shown), leaving it plugged in and powered.



- C** Remove back panel by removing screws to expose the media player. *Blue light on media player confirms it is powered.*

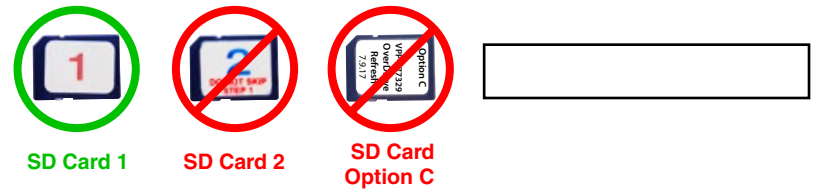


- D** Switch media player power to **OFF**. Remove existing SD card by pushing it down and then pulling it out. Discard this SD card.

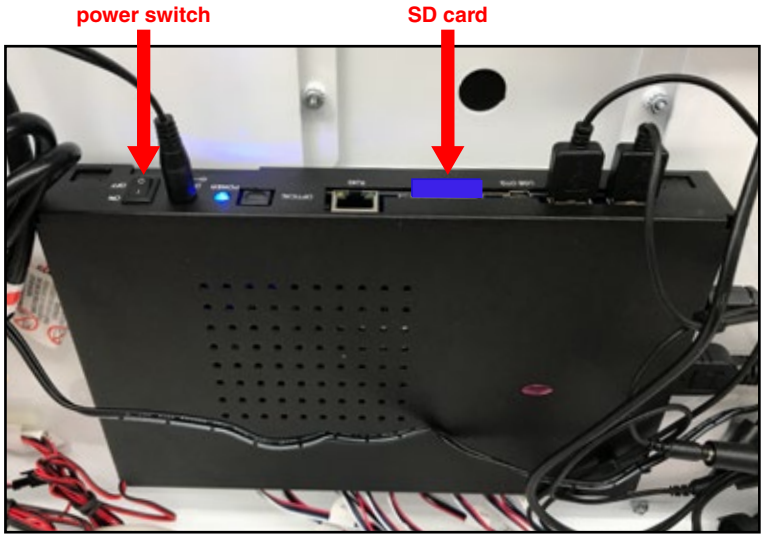


Rand McNally OverDrive Display ME-01 - Refresh Option C

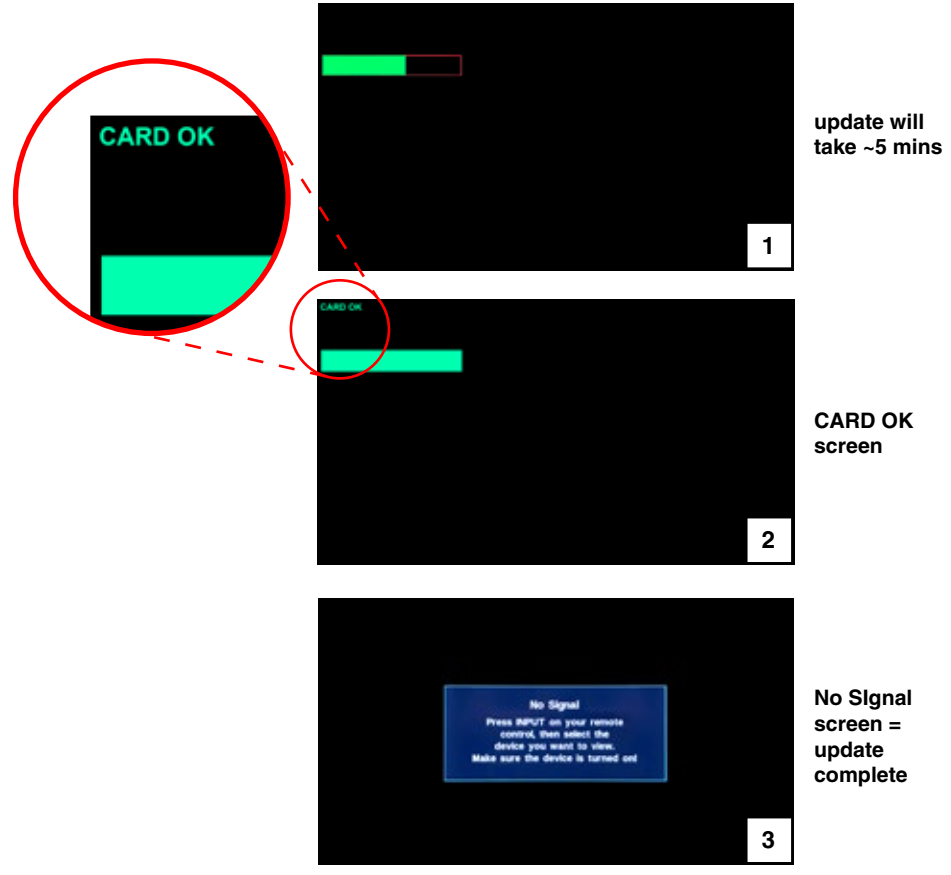
2 UPDATING MEDIA PLAYER SOFTWARE --- SD CARD 1



A Put **SD card 1** in the media player and push it until it clicks. Then switch media player power switch to **ON**.



B Monitor screen will be black with a progress bar that will progress until **CARD OK** is shown (~5 minutes). Speakers may make a popping noise during this process. After **CARD OK** is shown, screen will show **No Signal**, meaning the update is complete.



DO NOT INTERRUPT POWER DURING THE UPDATE OR MEDIA PLAYER MAY BECOME UNUSABLE

C Turn media player power switch to **OFF** and remove **SD card 1**.

Rand McNally OverDryve Display ME-01 - Refresh Option C

3 UPDATING MEDIA PLAYER SOFTWARE --- SD CARD 2



SD Card 1

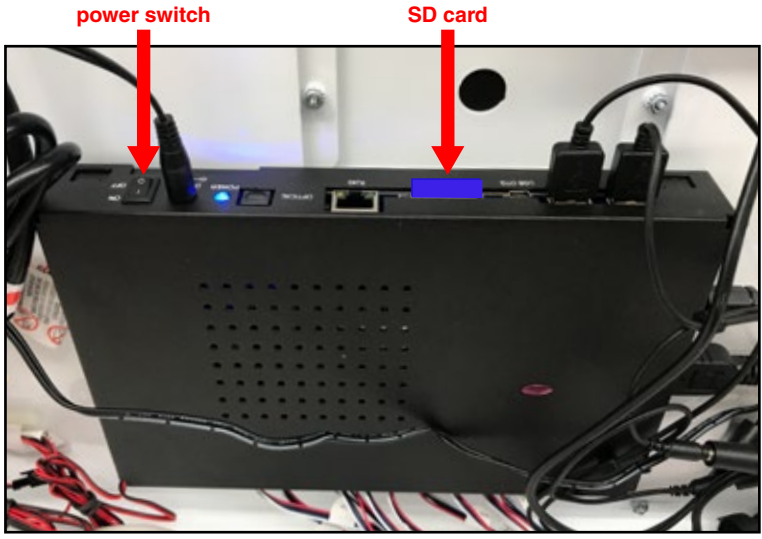


SD Card 2

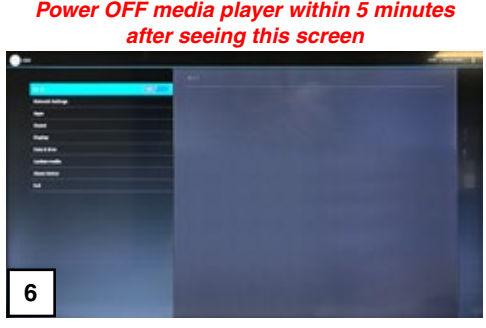
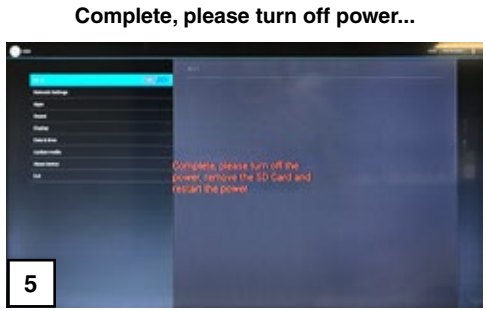
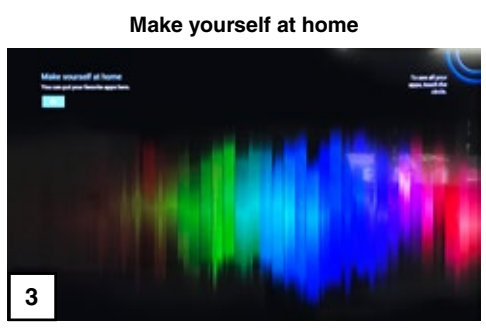
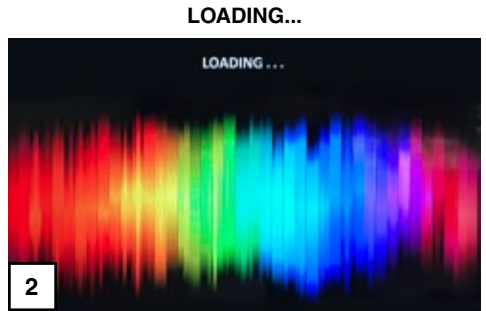


SD Card Option C

A Put **SD card 2** in the media player and push it until it clicks. Then switch media player power switch to **ON**.



B Monitor screen will change several times as shown below. *NOTE: update will take ~3 minutes.*



DO NOT INTERRUPT POWER DURING THE UPDATE OR MEDIA PLAYER MAY BECOME UNUSABLE

C Turn media player power switch to **OFF** and remove **SD card 2**.

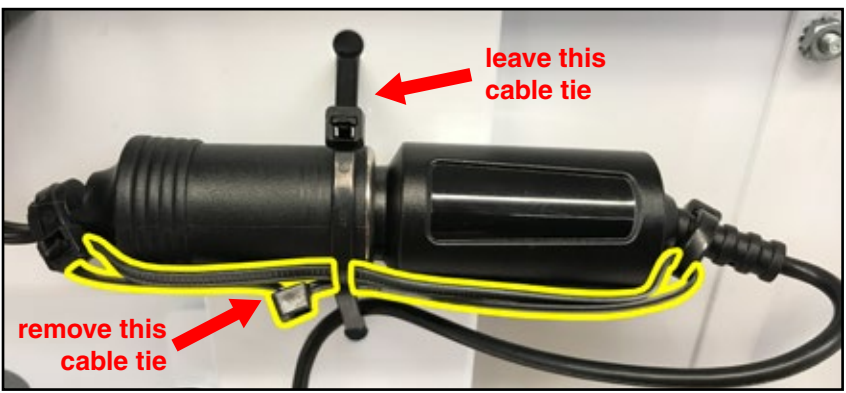
Rand McNally OverDryve Display ME-01 - Refresh Option C

4 REMOVING EXISTING OVERDRIVE 7 POD ASSEMBLY

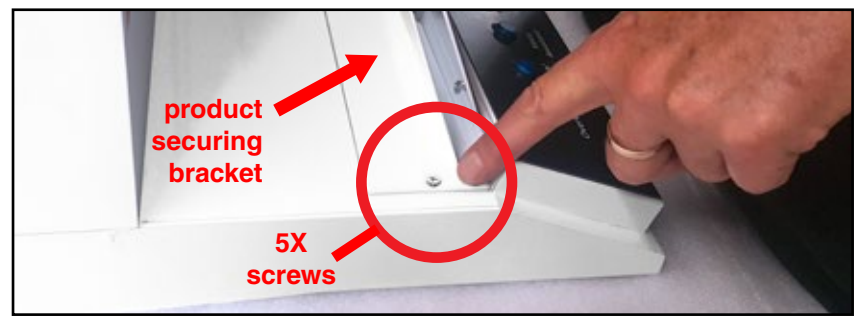


Existing OverDryve 7 pod assembly

A On back of display, remove ONLY the cable tie holding cigarette lighter adapter into power connector (highlighted in red). Then remove the cigarette lighter adapter from the power connector. Leave it until later step.



B On front of display, remove 5 screws from product securing bracket, then lift off bracket and set bracket and screws away from display for later reuse.

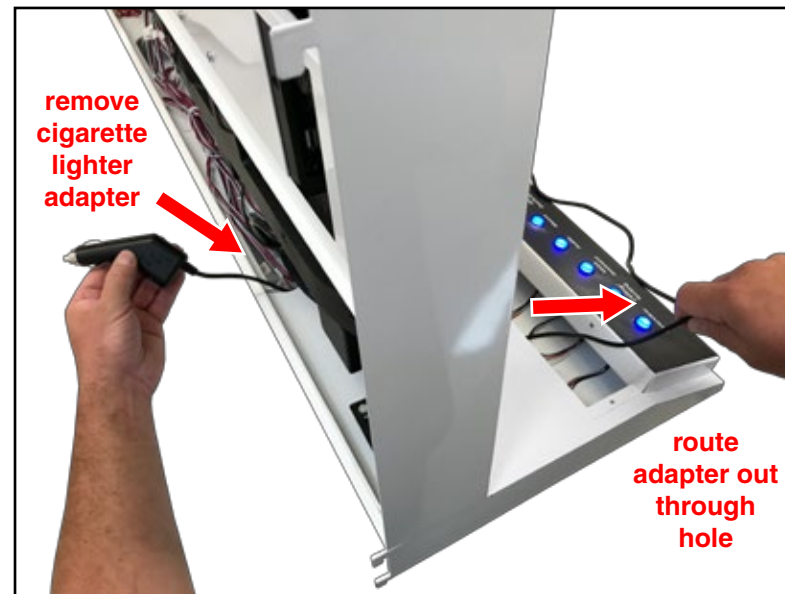


Rand McNally OverDryve Display ME-01 - Refresh Option C

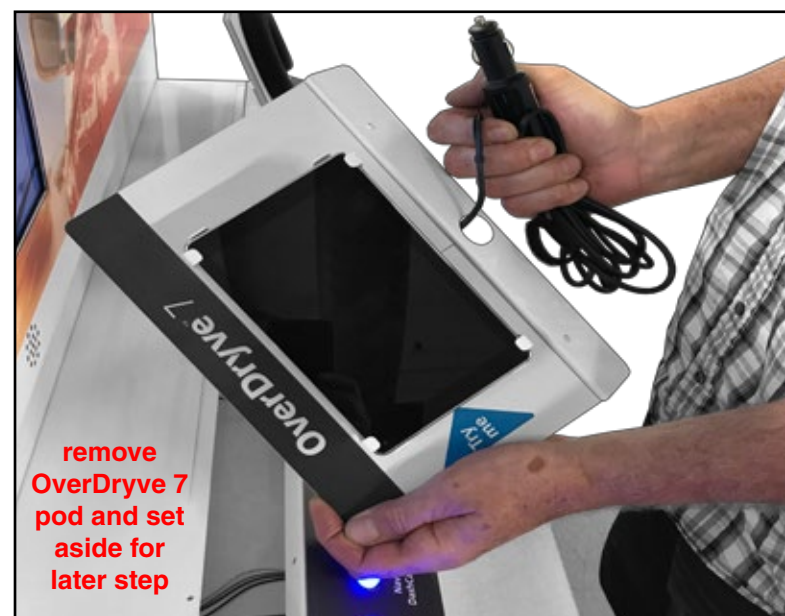
- C** Remove 2 screws to remove OverDryve 7 pod, then place it behind adjacent pods as shown below.



- D** Remove the cigarette lighter adapter from the display as shown.



- E** Remove OverDryve 7 pod and set aside for later step.



Rand McNally OverDryve Display ME-01 - Refresh Option C

5 INSTALLING NEW OVERDRYVE 7C POD ASSEMBLY



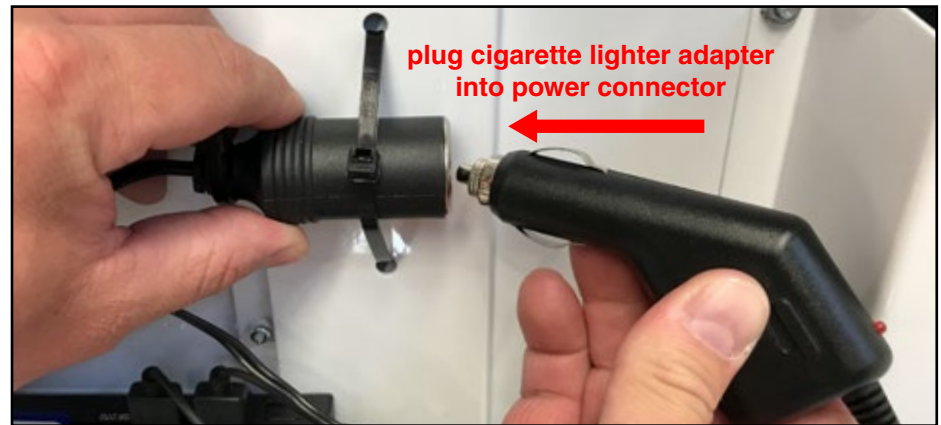
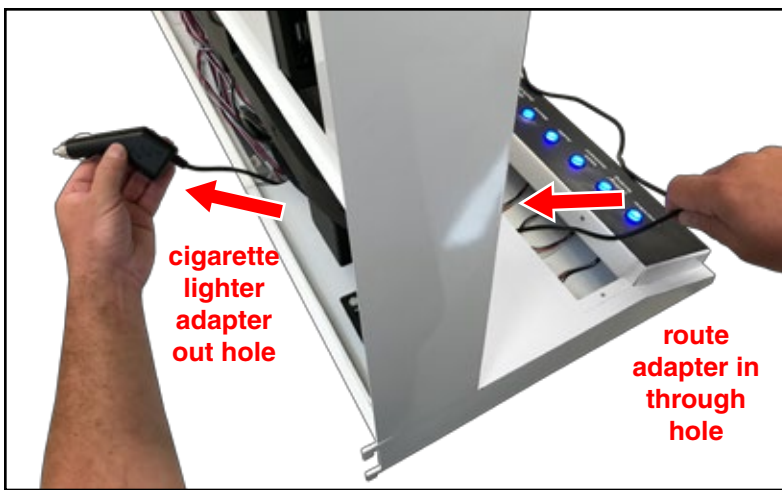
New OverDryve 7C pod assembly

A Place new OverDryve 7C pod assembly behind adjacent pods as shown in the picture.



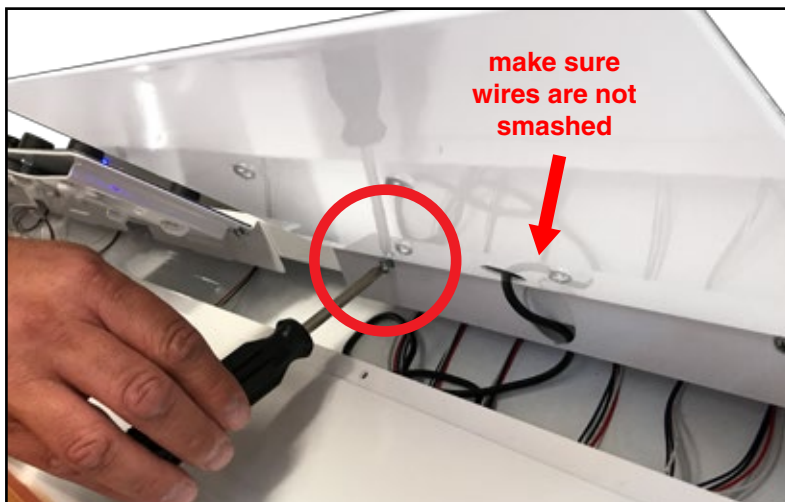
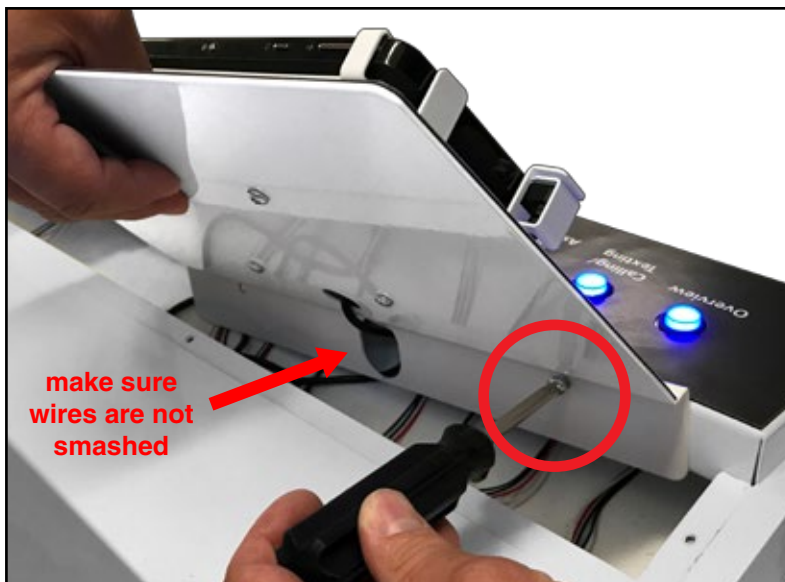
C On back of display, plug in OverDryve 7C cigarette lighter adapter into power connector. *Ensure power connection by red light on cigarette lighter adapter.*

B Route the cigarette lighter adapter through the display as shown.



Rand McNally OverDryve Display ME-01 - Refresh Option C

- D** Place new OverDryve 7C pod so outermost screw can easily be attached through hole on pod, then make sure wire is not being smashed before snug tightening the screw. Attach other screw and before final tightening, ensure wire is not being smashed by pod.



Rand McNally OverDryve Display ME-01 - Refresh Option C

6 REMOVING EXISTING DASH MOUNT POD ASSEMBLY

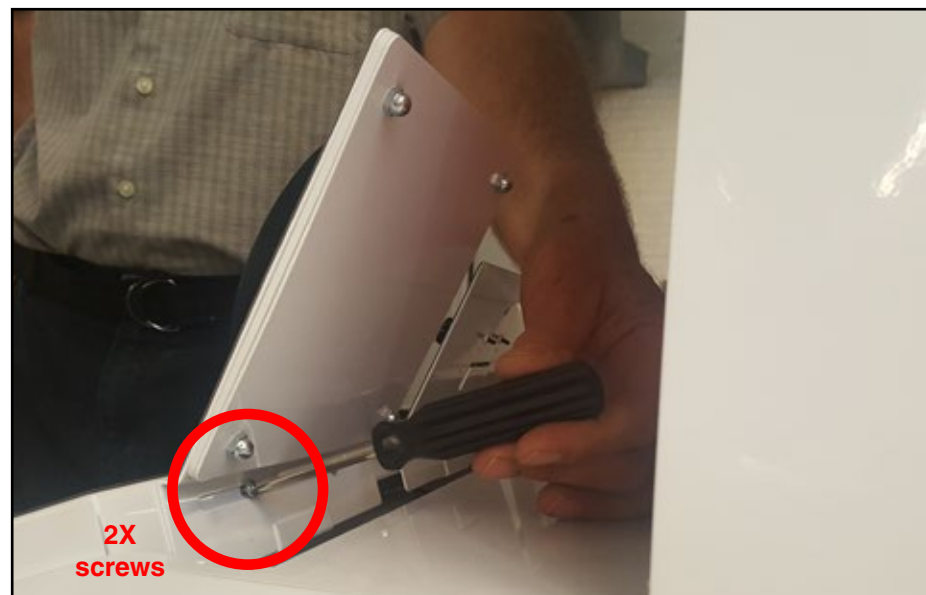


existing dash
mount pod assembly

- A** Dash mount pad is on right side of display (shown highlighted in yellow).



- B** Remove 2 screws located behind dash mount pod to disengage pod from the display. Lay pod on top surface of display until later step.



Rand McNally OverDrive Display ME-01 - Refresh Option C



TWO PEOPLE REQUIRED

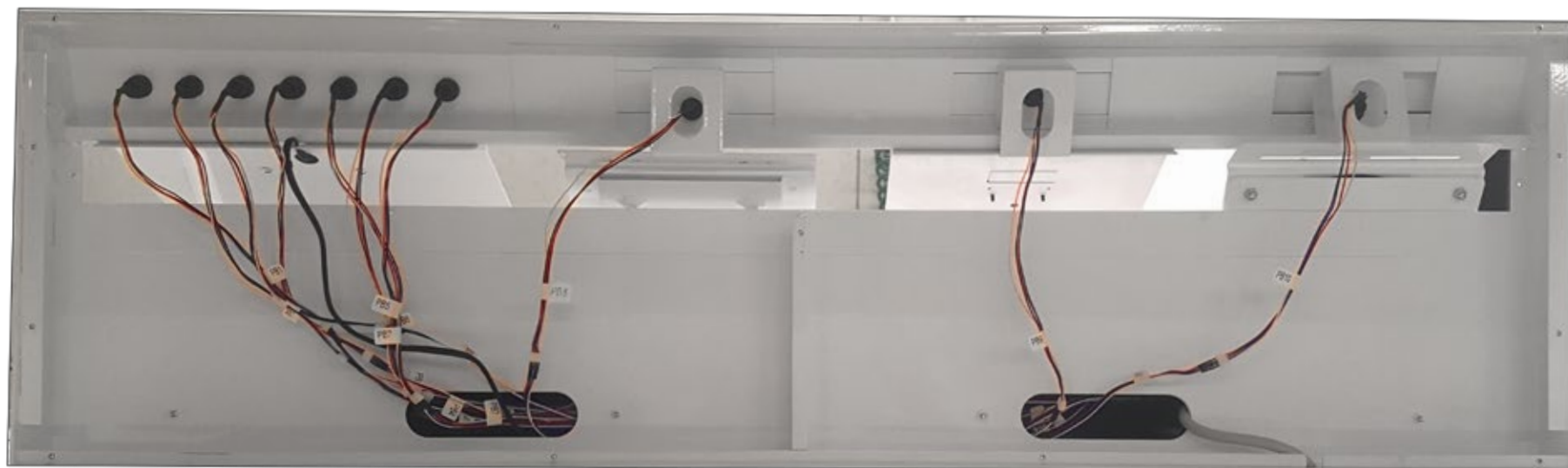
(1 person shown for clarity)



- C** Leaving display plugged in and powered, lift display off shelf and place on floor. Tilt display and gently place it on its back. *NOTE: take care that loose dash mount pod is handled gently when tilting.*



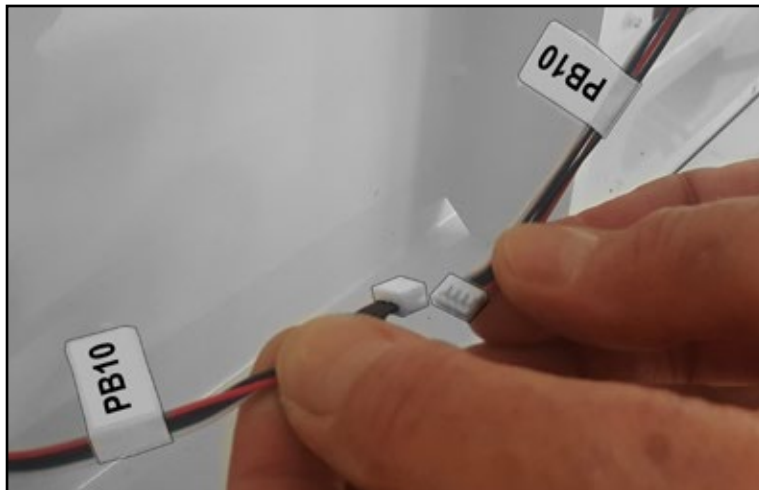
- D** Remove screws from the bottom panel to expose button wiring. Place bottom panel and screws aside for later reuse.



view with bottom panel removed

Rand McNally OverDryve Display ME-01 - Refresh Option C

- E** Unplug plastic connector on button wires PB10.



- F** Remove dash mount pod through bottom of display and set aside.



- G** Following steps below, remove PB10 button from dash mount pod and then attach PB10 button to the new OverDryve TND-740 pod.

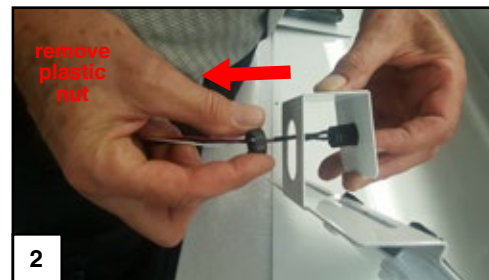
Remove dash mount from pod by removing 4 acorn nuts. Place dash mount aside until later step. Discard metal parts of dash mount pod.

Removing Buttons

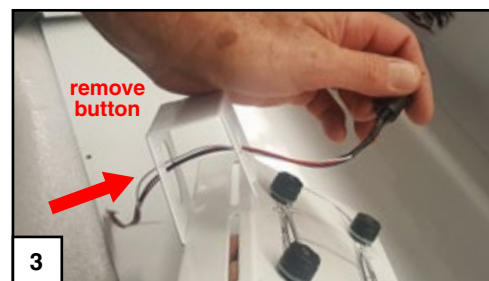
- unscrew plastic nut



- remove plastic nut, place aside for re-use

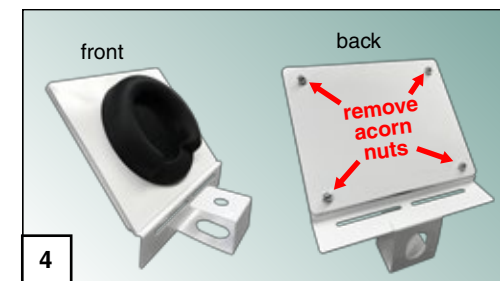


- remove button, place aside for re-use

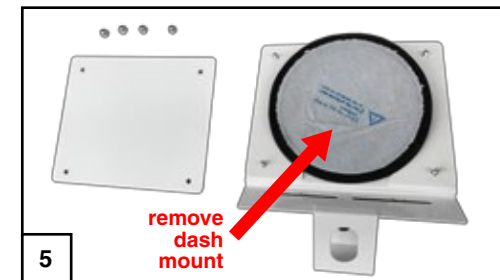


Removing Dash Mount

- remove 4 acorn nuts on dash mount pod



- remove dash mount, discard all other parts



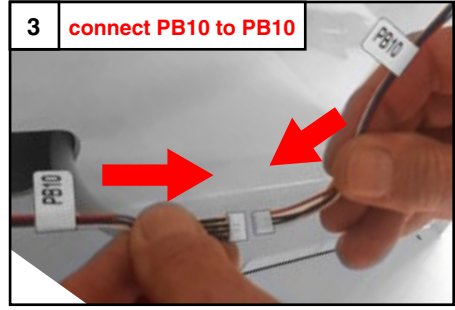
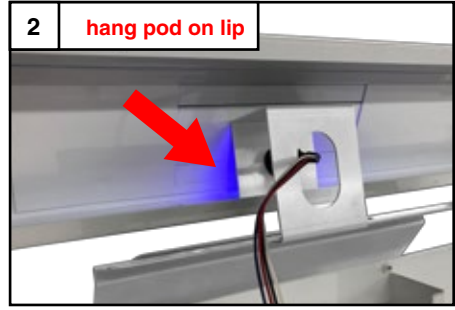
- place dash mount aside for later steps



Rand McNally OverDryve Display ME-01 - Refresh Option C

7 INSTALLING NEW OVERDRYVE TND-740 POD ASSEMBLY

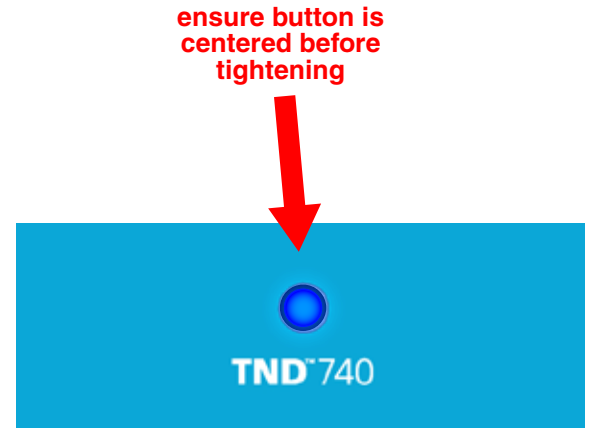
A Place new Dummy OverDryve TND-740 pod in remaining open position, hang pod on lip, then connect PB10 to PB10.



! TWO PEOPLE REQUIRED !
(1 person shown for clarity)

B Re-attach bottom cover and tilt display back upright.

C Attach Dummy OverDryve TND-740 pod with screws, ensuring button is centered in hole before tightening.



New OverDryve 7C pod assembly (with button installed from pervious step)



Rand McNally OverDryve Display ME-01 - Refresh Option C

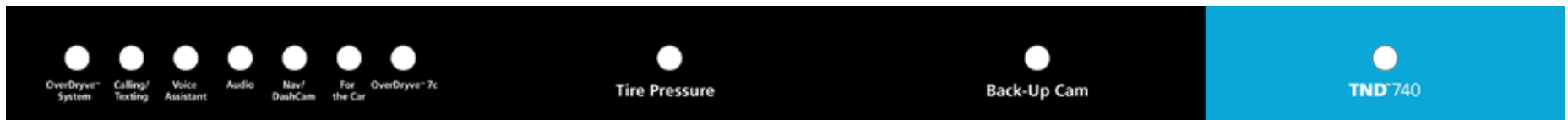
F Remove existing magnetic button graphic and discard. Attach new Button Graphic - Option C.



G Remove existing magnetic monitor housing graphic and discard. Attach new Monitor Housing Graphic - Option C.



new Monitor Housing Graphic - Option C



new Button Graphic - Option C

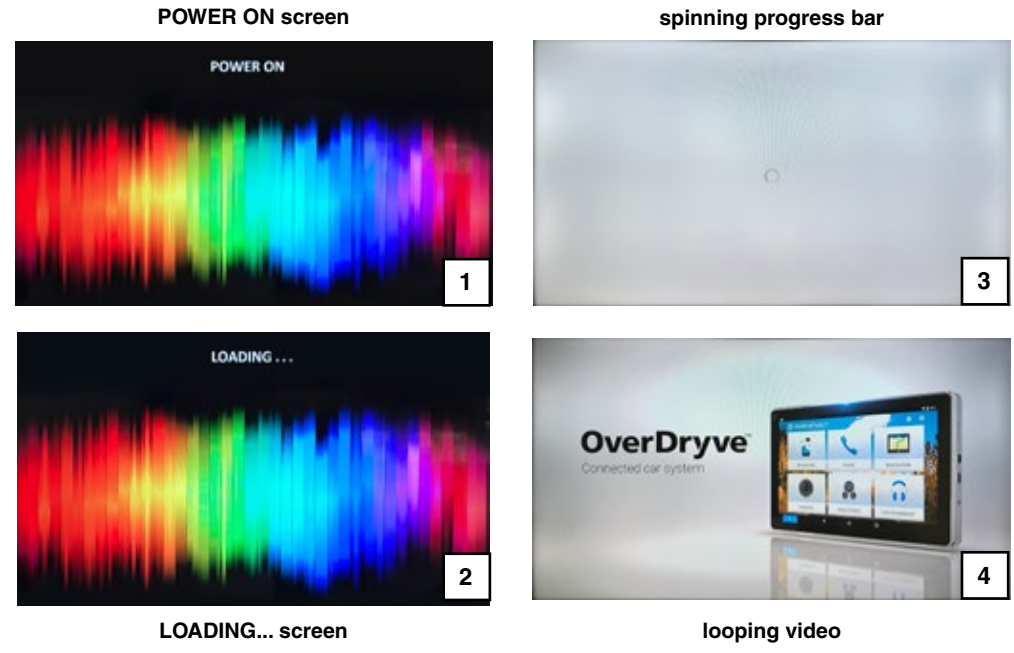
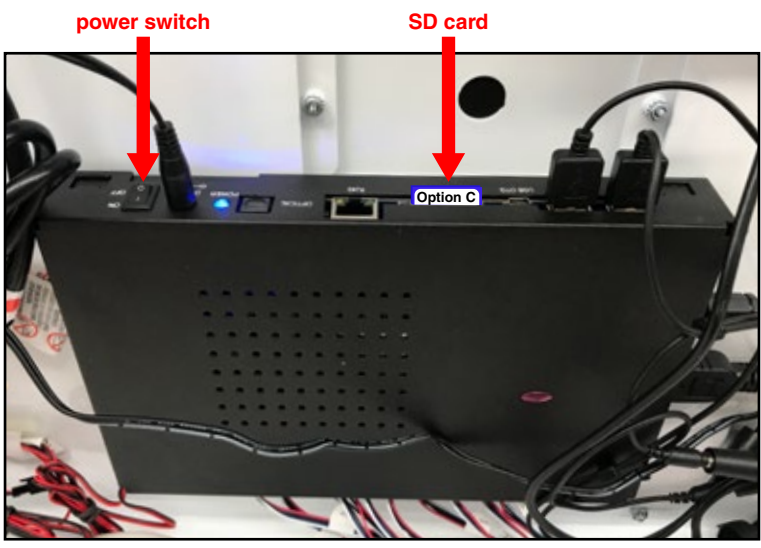
Rand McNally OverDryve Display ME-01 - Refresh Option C

8 UPDATING MEDIA PLAYER CONTENT --- SD CARD Option C



A Put **SD card Option C** in the media player and push it until it clicks. Then switch media player power switch to **ON**.

B Monitor screen will change a few times and when completed will start playing the looping video (~2 minutes).



⚠ TEST EXPERIENCE BEFORE CONTINUING ⚠

All buttons should be lit when display is playing looping video. Pressing a button should play a corresponding video relative to the button label, and pressed button stays lit. Test all buttons for functionality.

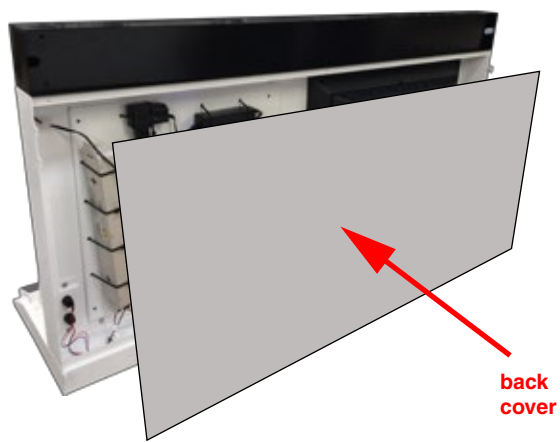
If experience is not working correctly, call support number on bottom of instruction sheet for troubleshooting.



Rand McNally OverDryve Display ME-01 - Refresh Option C

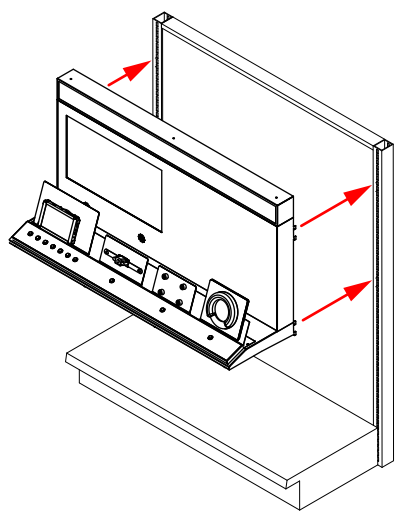
9 PUTTING DISPLAY BACK ON GONDOLA --- TWO PEOPLE REQUIRED

A Re-attach back panel using screws.

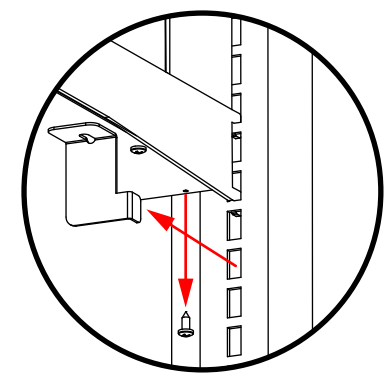


! TWO PEOPLE REQUIRED !

B Lift display and attach to gondola lining up top of display with top of gondola. *NOTE: Ensure hooks are properly engaged.*

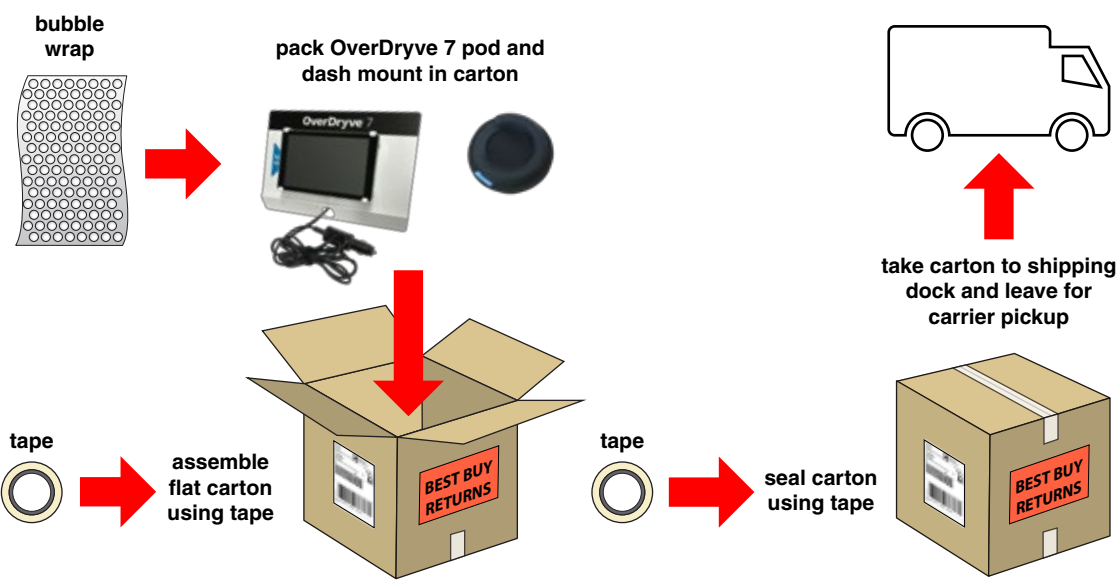


C On underside of display, using screws, re-attach safety brackets on left and right to secure display to gondola.



7 PACK AND SHIP RETURN PARTS (prepaid return shipping carton provided)

A Assemble flat carton using tape. Wrap OverDryve 7 pod and dash mount in bubble wrap, place in carton and seal carton with tape. Leave carton with shipping manager for carrier pickup.



Rand McNally OverDryve Display ME-01 - Refresh Option C

COMPLETED DISPLAY REFRESH



ensure OverDryve 7C is powered and demo is running